

KKL2X150VM

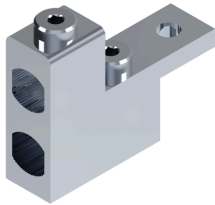
Cable Connectors

- Sales unit = 1 pc
- Suitable for Al/Cu cables
- Material: tin-coated aluminium
- IEC 61238-1 Class A
- Environmentally friendly materials

Conductors per cross section (mm²) table
>>

KKL Installation Instructions >>

Compatibility tables >>



Data subject to change without notice. Always confirm the data is correct from the seller.

Product details

SKU	KKL2X150VM
Al mm²	25-150
Color	Standard
Cu mm²	25-150
E-Number	1942111
EAN	6419410484302
In (Al) (A)	500
In (Cu) (A)	640
Key size	Hex 6
Mounting	Bolt M12
Number of Conductors	2
Package size	3
Torque Al/Cu (Nm)	12 (25-50 mm ²) / 22 (70-95 mm ²) / 38 (120-150 mm ²)
Un (V)	690
Weight (lb/kg)	0.397 / 0.18

Dimensional drawing

